

# Helpman LEX 14-7

## Specifications

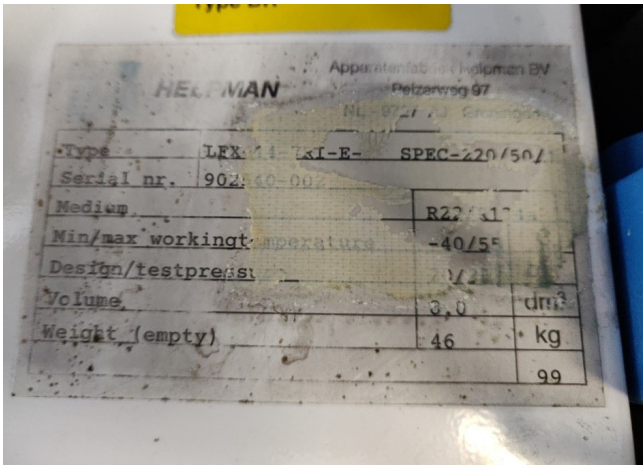
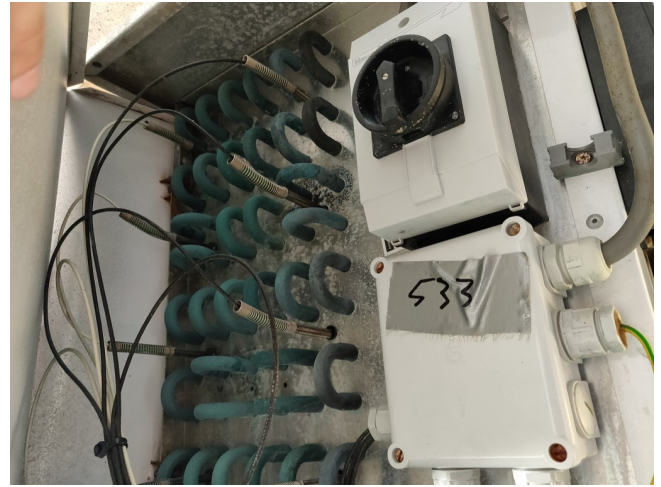
Marca	Helpman
Tipo	LEX 14-7
Capacidad kW	6
Refrigerante	Freon
Número de aficionados	1
Fan del Espacio in mm	7
Descongelación	Electric
m <sup>3</sup> /h	3.540
Tamaños	970x692x710mm
Comentarios	6kW at 8K // based on R404A // YOB 1999
Volume	8 dm <sup>3</sup>
Peso	46
Stock	1



## Description

### Used Helpman LEX 14-7

Used helpman LEX 14-7 · Size 970x692x710mm (LxWxH) · Weight: 46Kg · Fin space: 7 · m<sup>3</sup>/h: 3.540 · Fans: 1 · Hertz fans: 50Hz · refrigerant R404A · \*\*All components of this used evaporator will be tested on good working, leak free condition (electro engines), coils, bearings) Choosing HOSBV means buying with warranty. We perform a industrial cleaning and rust spots will be covered. Also, we can arrange your shipment.



**HELPMAN** 03-98

## Blow Through Unit Coolers 1.5 - 40 kW LEX

**Nominal Capacities (kW)**

Cooler type	R 22		R 134a		R 404A		For reference only		
	frosted DT <sub>1</sub>	dry conditions DT <sub>1</sub>	frosted DT <sub>1</sub>	dry conditions DT <sub>1</sub>	frosted DT <sub>1</sub>	dry conditions DT <sub>1</sub>	R 22	R 134a	R 404A
<b>Fin spacing 4 mm</b>									
LEX 2-4	1.5	1.3	1.5	1.3	1.1	1.3			
LEX 4-4	1.9	1.5	1.9	1.7	1.3	1.6			
LEX 6-4	2.8	2.4	2.8	2.4	2.1	2.5			
LEX 8-4	4.7	4.1	4.7	4.1	3.5	4.1			
LEX 10-4	4.7	4.4	4.8	4.4	3.8	4.2			
LEX 12-4	5.9	5.6	6.2	5.1	4.8	5.4			
LEX 14-4	6.5	6.4	7.1	5.7	5.6	6.2			
LEX 16-4	9.7	8.4	9.3	7.5	7.3	8.1			
LEX 18-4	9.7	8.7	9.8	8.5	7.6	8.6			
LEX 20-4	12.8	10.8	12.7	11.2	9.4	11.0			
LEX 22-4	16.1	13.0	15.4	14.0	11.3	12.4			
LEX 24-4	20.0	16.1	19.2	17.4	14.0	16.7			
LEX 26-4	26.0	23.0	26.0	22.6	20.0	22.8			
LEX 28-4	32.8	29.0	33.2	28.5	25.2	28.9			
LEX 30-4	40.3	32.5	38.5	35.0	28.3	33.4			
<b>Fin spacing 7 mm</b>									
LEX 2-7	1.3	1.2	1.3	1.1	1.0	1.2			
LEX 4-7	1.7	1.4	1.7	1.5	1.2	1.4			
LEX 6-7	2.5	2.2	2.5	2.2	1.9	2.2			
LEX 8-7	4.1	3.7	4.3	3.6	3.3	3.7			
LEX 10-7	3.7	3.6	4.0	3.2	3.2	3.5			
LEX 12-7	5.0	4.9	5.3	4.4	4.3	4.6			
LEX 14-7	5.5	5.9	6.0	4.8	4.8	5.2			
LEX 16-7	7.4	7.3	8.0	6.4	6.3	7.0			
LEX 18-7	8.5	7.8	8.8	7.4	6.8	7.6			
LEX 20-7	11.4	10.0	11.4	9.8	8.7	9.8			
LEX 22-7	14.5	12.4	14.3	12.6	10.7	12.4			
LEX 24-7	18.1	15.6	17.8	15.7	13.5	15.5			
LEX 26-7	22.8	21.2	23.4	19.8	18.4	20.2			
LEX 28-7	28.5	26.5	29.3	24.8	23.0	25.5			
LEX 30-7	36.5	31.0	35.8	31.7	27.0	31.2			

**Correction Factors R 404A / DT<sub>1</sub>**

DT <sub>1</sub>	Evaporating Temperature (b) °C												
K	+5	0	-5	-8	-10	-15	-20	-25	-30	-35			
	1.00	0.98	0.95	0.92	0.88	0.82	0.75	0.68	0.62	0.58			

**Capacities**

- Frosted Conditions
- Lightly frosted coil
- Relative Humidity 85 %
- Suction gas superheating 62 % of the temperature difference (DT<sub>1</sub>), with a minimum of 3.5 K
- Refrigerant liquid temperature 30 °C
- (for t = -20 °C and below, liquid temperature ...)

## Blow Through Unit Coolers 1.5 - 40 kW LEX

**Dimensions / Connections**

Cooler type	Dimensions mm						Ships vol. m <sup>3</sup>	Cooler weight kg	Coil surface		Int. vol. dm <sup>3</sup>	Refrig. conn. inlet O.D.	suction O.D.S.
	A	B	D	F	G	H			4 mm	7 mm			
LEX 2-4	198	412	485	385	-	360	380	0.3	18	17	7.7	4.7	2.1
LEX 4-4	258	472	495	395	-	430	440	0.3	22	21	11.2	6.7	3.0
LEX 6-4	358	532	555	455	-	500	510	0.3	27	25	16.8	10.1	4.0
LEX 8-4	458	602	640	500	-	550	570	0.6	38	35	26.1	15.7	6.0
LEX 10-4	558	692	730	590	-	600	630	0.5	35	32	22.4	13.5	6.0
LEX 12-4	658	792	830	690	-	700	730	0.5	42	39	33.6	20.2	6.8
LEX 14-4	758	892	930	790	-	800	830	0.8	50	46	40.8	24.2	8.8
LEX 16-4	858	992	1030	890	-	900	930	0.8	58	54	48.0	28.8	10.8
LEX 18-4	958	1092	1130	990	-	1000	1030	1.0	71	66	59.2	34.4	11.8
LEX 20-4	1058	1192	1230	1090	-	1100	1130	1.3	85	79	70.5	42.4	15.5
LEX 22-4	1158	1292	1330	1190	-	1200	1230	1.7	100	93	81.8	50.4	18.5
LEX 24-4	1258	1392	1430	1290	-	1300	1330	2.2	118	109	94.0	58.4	21.5
LEX 26-4	1358	1492	1530	1390	-	1400	1430	2.8	138	127	107.0	66.4	24.5
LEX 28-4	1458	1592	1630	1490	-	1500	1530	3.5	160	147	120.0	74.4	27.5
LEX 30-4	1558	1692	1730	1590	-	1600	1630	4.2	185	170	133.0	82.4	30.5

**Fans / Electric Defrost**

Cooler type	number	dia-meter mm	air volume		air <sup>2</sup> throw m	sound <sup>3</sup> dBA	fan power		Electric defrost		
			4 mm spacing m <sup>3</sup> /h	7 mm spacing m <sup>3</sup> /h			nominal / absorbed <sup>4</sup> W	nominal / absorbed <sup>4</sup> W	number of elements	defrost power <sup>5</sup> reduced kW	
LEX 2-4	1	254	1030	1080	10	48	30/90	30/90	1	1	1.28
LEX 4-4	1	305	1430	1570	12	60	30/100	30/100	1	1	1.76
LEX 6-4	1	305	1430	1500	12	50	30/100	30/100	2	1	2.64
LEX 8-4	1	356	2480	2520	15	53	70/160	90/140	1	1	3.2
LEX 10-4	2	305	2970	3130	15	53	30/100	30/100	2	1	3.0
LEX 12-4	2	305	2970	3070	15	53	30/100	30/100	2	1	4.8
LEX 14-4	2	305	2970	3070	15	53	30/100	30/100	2	1	4.8
LEX 16-4	2	356	4060	3940	18	57	70/200	90/215	2	1	6.4
LEX 18-4	2	406	4960	4840	20	60	220/380	250/400	5	1	6.0
LEX 20-4	2	406	4960	4840	20	60	220/380	250/400	5	1	8.4
LEX 22-4	2	406	6730	7080	20	63	220/380	250/400	5	1	13.2
LEX 24-4	2	457	8800	9260	20	66	220/380	250/400	5	1	13.2
LEX 26-4	2	508	11000	11500	20	66	220/380	250/400	5	1	19.2
LEX 28-4	3	457	13000	14000	20	66	220/380	250/400	5	1	19.2
LEX 30-4	3	508	16600	17500	20	69	220/380	250/400	5	1	24.0